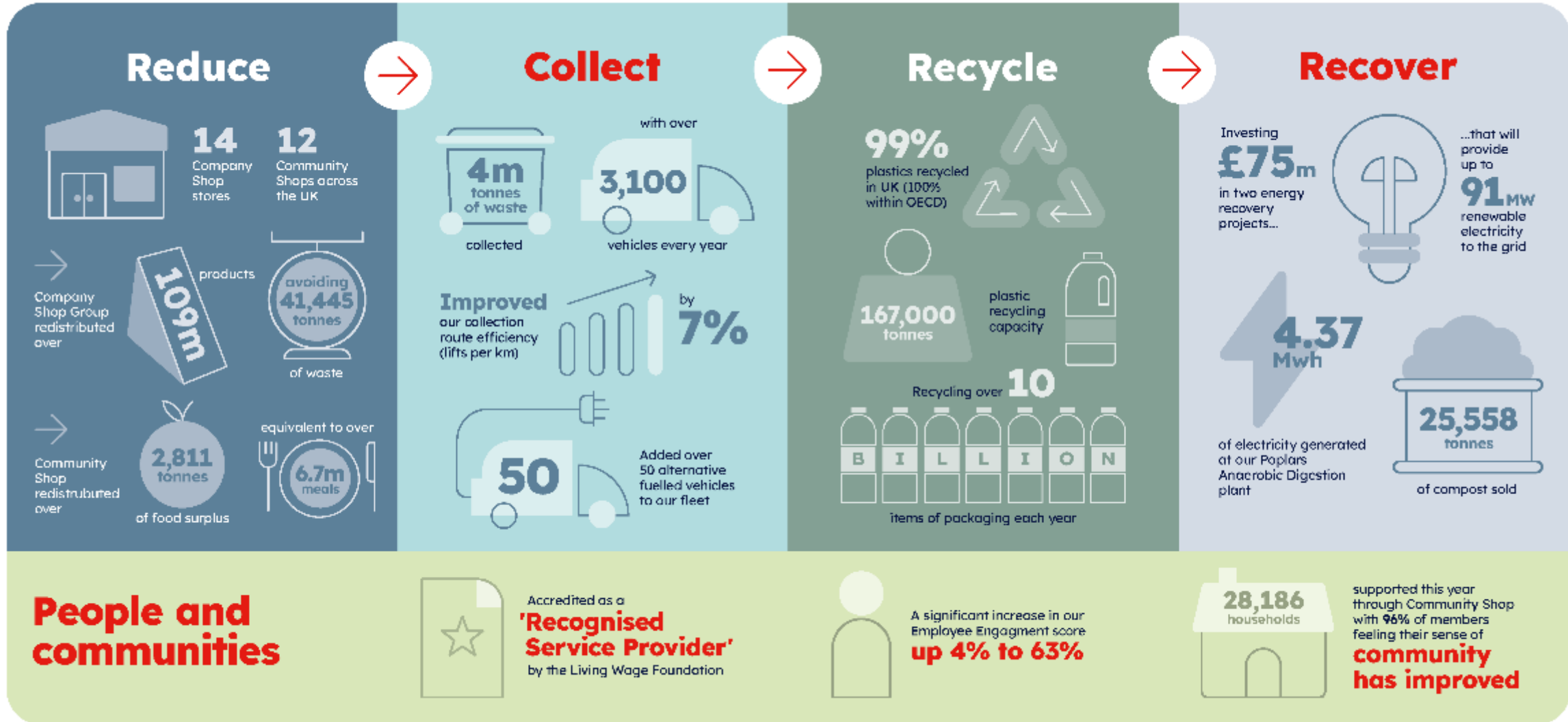


Continuous Improvements in Recycling

Hannah Clifford, Strategic

Development Manager



Resource and Energy Division



Material Recovery Facilities/Plastic Recovery Facilities



Polymers



Landfill, Landfill Gas, Soil Treatment, Composting, Anaerobic Digestion



Energy from Waste and Mechanical Biological Treatment

The majority of feedstock received at Polymers is supplied internally by the MRFs/PRFs

What We Do



Redcar (HDPE – Food Grade pellet, HDPE/PP Non-Food flake and pellet)

- Capacity of 83,000tpa/1.8bn bottles
- Original site operating since 2008, 3rd HDPE food grade line opened in 2023

Washington (PP & HDPE flake)

- Capacity of 25,000tpa
- Opened in 2021, £7m investment

Seaham (Food Grade PET bottle to flake & pellet)

- Capacity of 57,000tpa/1.3bn bottles
- Opened in 2020, £27m investment

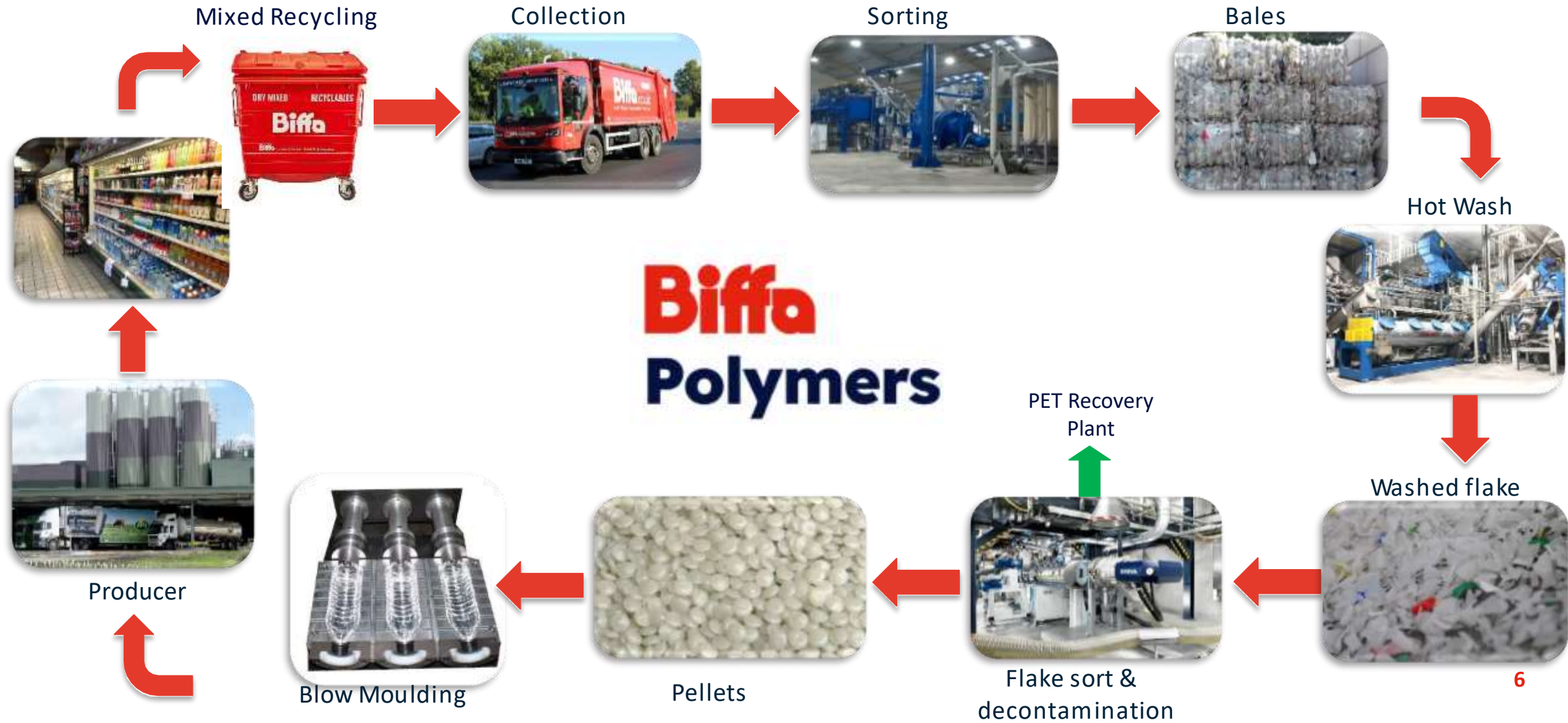
Sherburn (Food Grade PET flake to pellet)

- Capacity of 25,000tpa
- Acquired in 2023



The Circular Economy of Plastics

Biffa

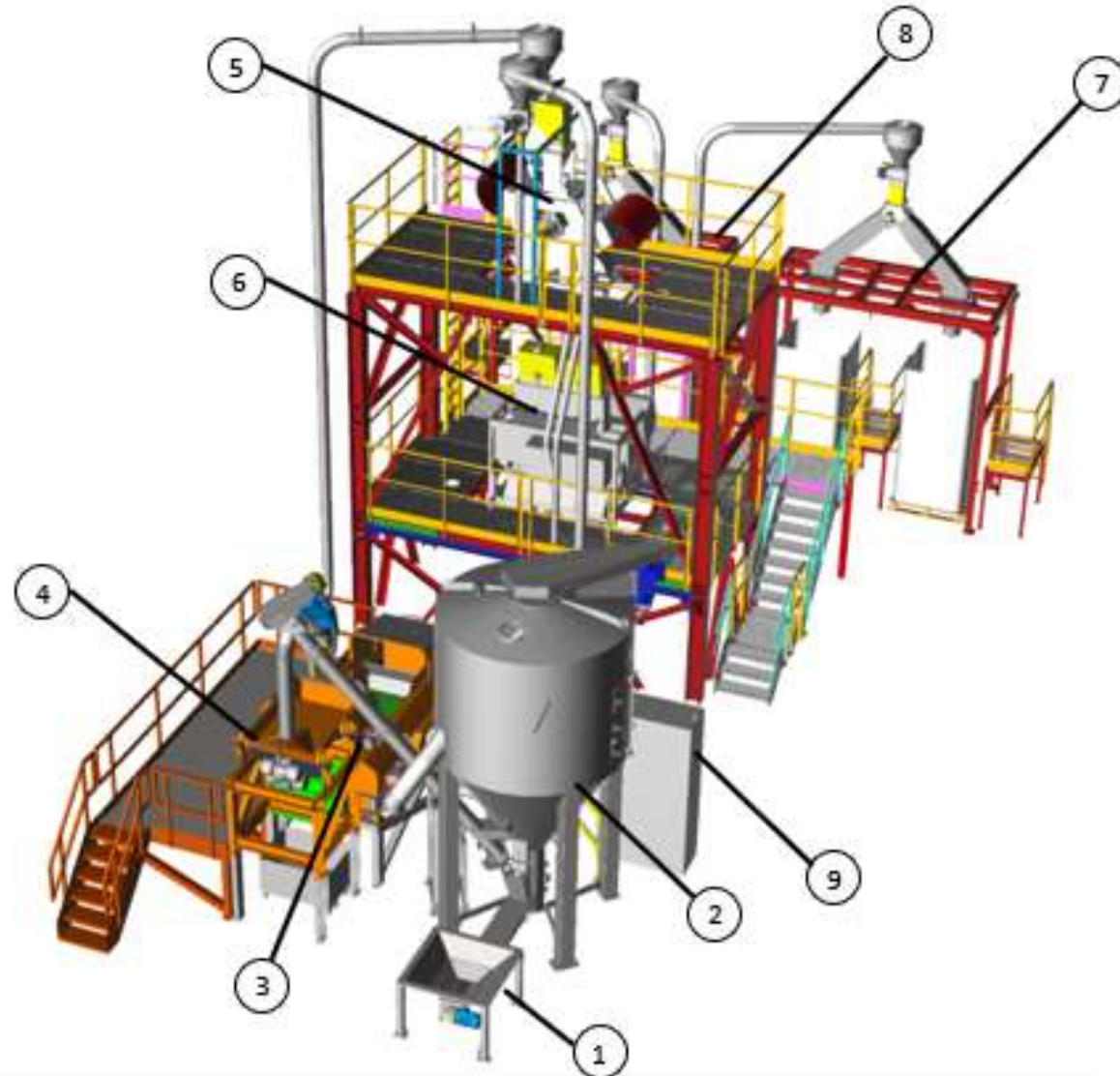


PET Recovery Plant



System Layout

The system comprises of the following pieces of equipment:



Recovering PET



Thank you

Contact

Hannah Clifford

hannah.clifford@Biffa.co.uk