

Environment Act – update

Mike Gardner – Local Authority Technical Consultant

17th February 2022



wrap

25 year Environment Plan



Resources & Waste Strategy



Environment Act



Environment Act 2021



Statutory Guidance

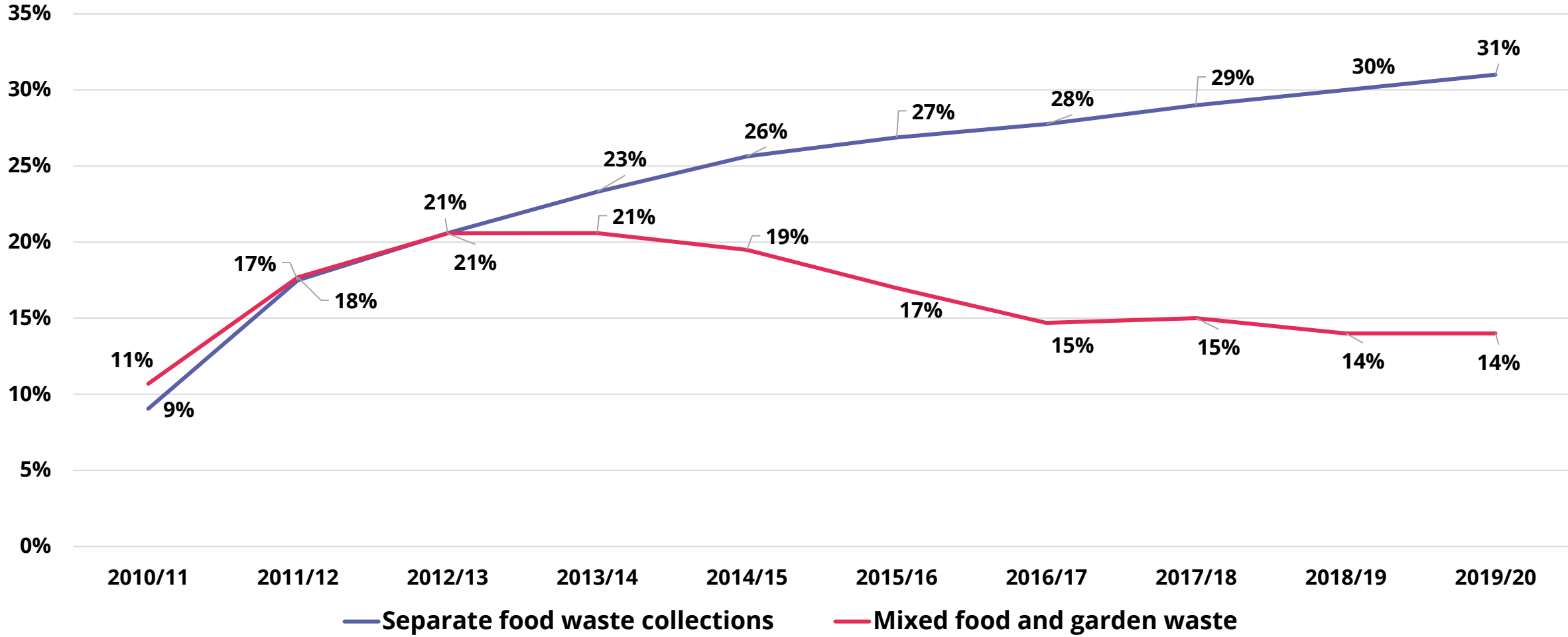


Environment Act 2021

Amendments to section 45 of the 1990 Environmental Protection Act

- **Recyclable household waste must be collected separately from other household waste and must be collected for recycling or composting**
- **Recyclable household waste in each recyclable waste stream must be collected separately, except where:**
 - it is not technically or economically practicable to collect separately
 - collecting recyclable waste streams separately has no significant environmental benefit
- **Recyclable waste streams are—**
 - (a) glass;
 - (b) metal;
 - (c) plastic;
 - (d) paper and card;
 - (e) food waste;
 - (f) garden waste
- **Recyclable household waste within streams (a) to (d) may not be collected together with streams (e) or (f).**
- **Recyclable household waste which is food waste must be collected at least once a week.**

PERCENTAGE OF HOUSEHOLDS WITH FOOD WASTE COLLECTION



Separate food waste collections by 2024/25



Collected weekly





Environment Act 2021

Amendments to section 45 EPA

Statutory guidance and
Minimum service standards

The Secretary of State may by regulations amend section 45 so as to:

- **add further recyclable waste streams, and**
- **make provision about the extent to which recyclable household waste or recyclable relevant waste in any of those waste streams may or may not be collected together with recyclable household waste or recyclable relevant waste in another recyclable waste stream.**



Environment Act 2021

Statutory guidance and Minimum service standards

- The circumstances in which it may not be technically or economically practicable to collect recyclable waste streams separately, or in which separate collection may not have significant environmental benefit
- Written assessments (TEEP)
- The kinds of (commercial) waste which are defined as 'relevant waste'
- The frequency with which household waste other than recyclable household waste which is food waste should be collected

TOP TEN UK RESIDUAL YIELDS

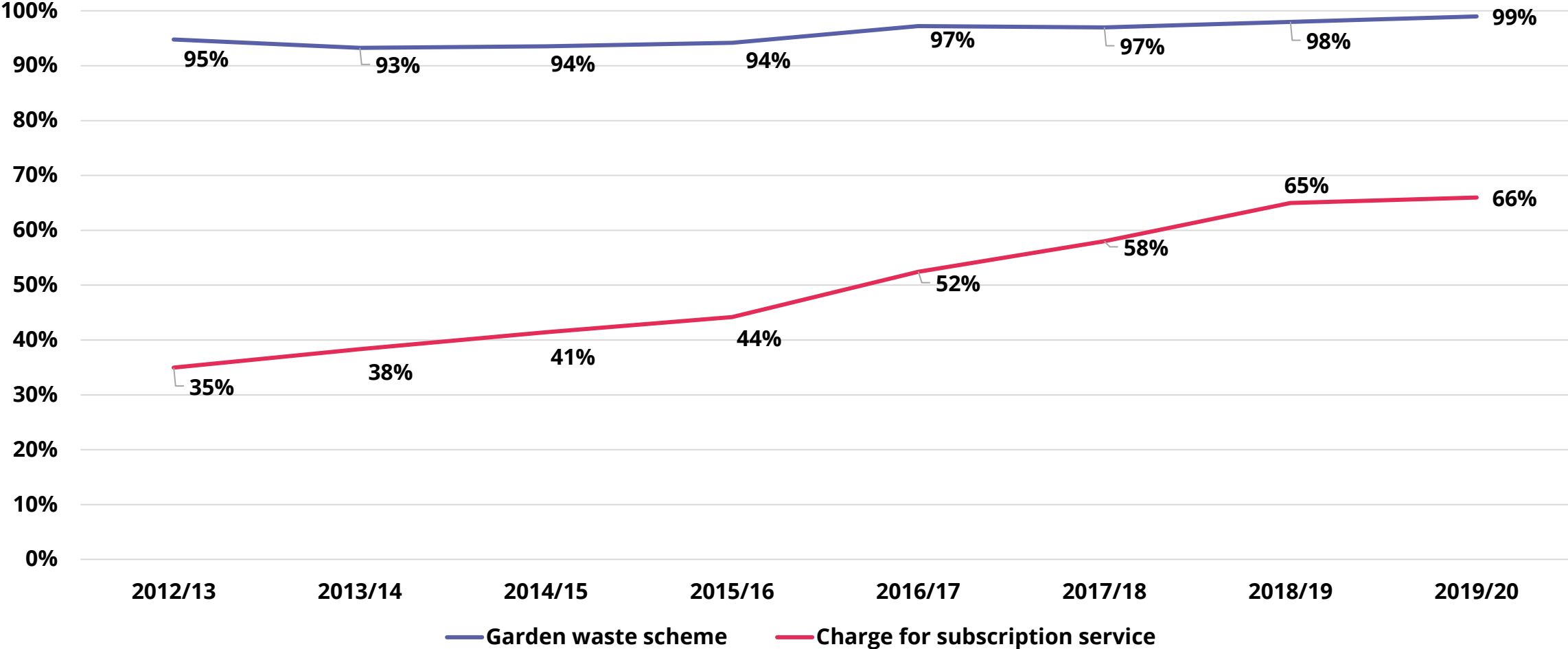
Authority	Residual yield 2019/20
Pembrokeshire	179
Monmouthshire	182
Bridgend	186
Carmarthenshire	207
Powys	208
Ceredigion	219
Vale of Glamorgan	221
Swansea	222
Cardiff	224
Stroud	226

IMPACT OF RESIDUAL WASTE RESTRICTIONS

Change	Dry	Separate food	Residual	Overall reduction *
3 weekly residual	+10%	+20%	-19%	-18%
Fortnightly with restricted volume	+15%	+25%	-24%	-15%

* Overall reduction in household waste, including HWRC

PERCENTAGE OF LOCAL AUTHORITIES COLLECTING GARDEN WASTE



STATUTORY GUIDANCE

MINIMUM SERVICE STANDARDS

For certain waste streams collected from households, exemptions to separate collection may be appropriate in cases where collection of recyclable waste streams together does not significantly reduce the potential for these recyclable waste streams to be recycled or composted.

- **Plastic and metal**
- **Glass and metal**

EXCEPTIONS TO THE REQUIREMENT TO SEPARATELY COLLECT 'RECYCLABLE WASTE STREAMS'

Not Technically practicable:

- **Type of housing stock and accessibility – e.g. flats, houses of multiple occupation, student accommodation, historic buildings, dwellings with communal recycling points**
- **Rurality and geography of property location**
- **Availability of suitable containers**
- **Storage of containers at properties**
- **Storage in existing waste transfer infrastructure**

EXCEPTIONS

Not Economically practicable:

- Type of housing stock and accessibility – e.g. flats; houses of multiple occupation, student accommodation, historic buildings, dwellings with communal recycling points
- Rurality and geography of property location
- Available recycling and treatment infrastructure

EXCEPTIONS

No significant environmental benefit:

- Greenhouse gas emissions – for example from vehicles or Materials Facilities
- Lifts per vehicle and journey length
- Availability of recycling facilities
- Reject tonnages

Collections hierarchy?

Multi-stream



Two-stream



Comingled



NEW BURDENS

'As part of the new duties imposed on local authorities in the Environment Bill, central Government will fund net additional capital costs (for example containers, vehicles), and transitional costs such as communications and re-routing vehicles, to implement the new consistent collection measures'

'Government will ensure that local authorities are resourced to meet any new burdens arising from this policy, including up front transition costs and ongoing operational costs'.

**GOVERNMENT'S
'NET ZERO STRATEGY'**

October 2021:

£295million of Capital funding 'to allow local authorities to prepare to implement separate weekly food waste collections'



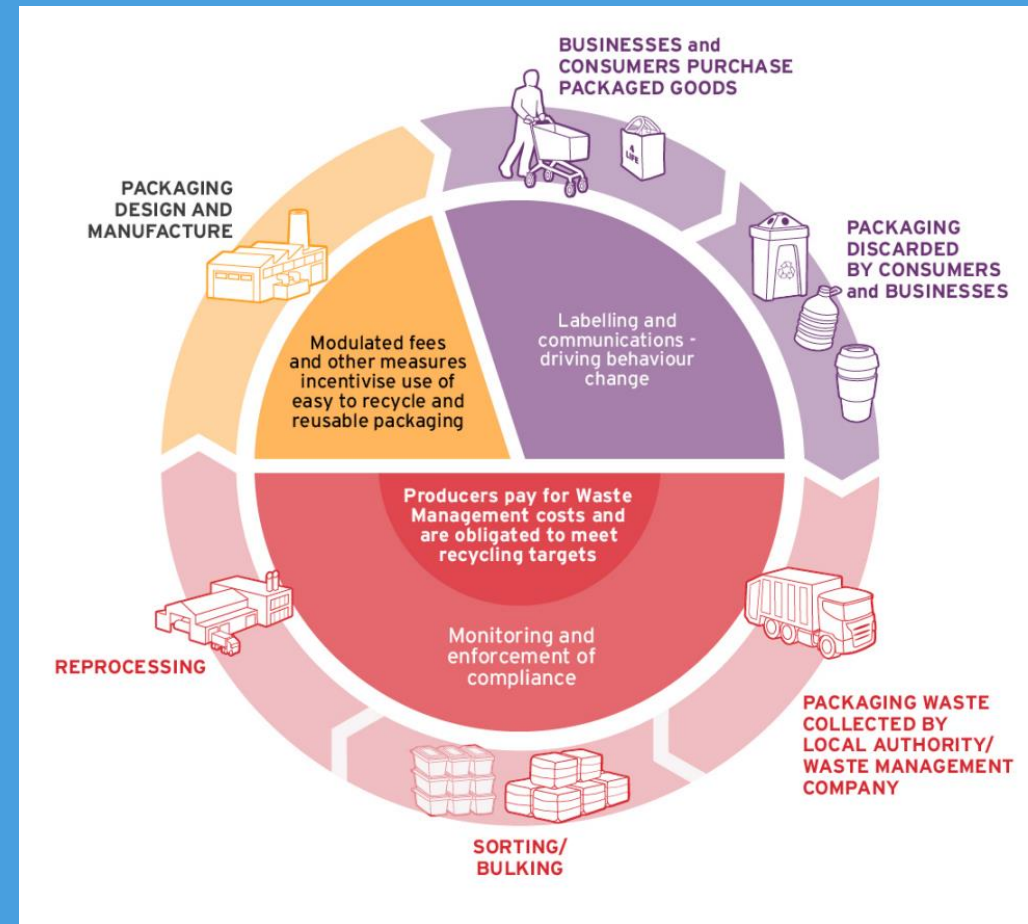
Environment Act 2021

Extended Producer Responsibility

Moving the cost of managing packaging waste from local authorities to producers

Section 50 (Producer responsibility obligations):

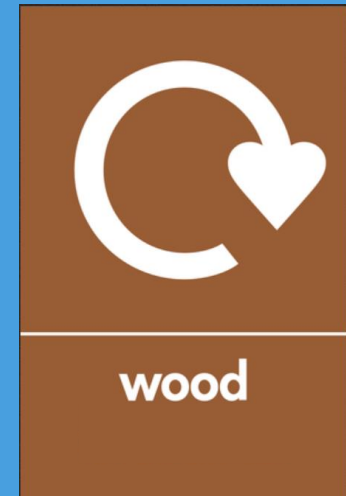
- confers powers on the relevant national authority to make regulations about producer responsibility obligations
- confers power on the relevant national authority to make regulations about the enforcement of regulations



EXTENDED PRODUCER RESPONSIBILITY:

SCOPE

In Scope

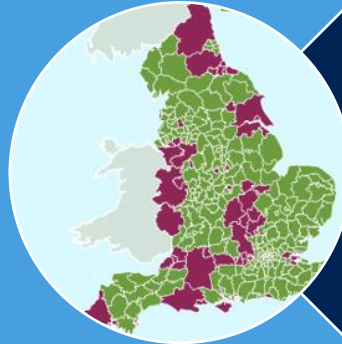


EXTENDED PRODUCER RESPONSIBILITY:

KEY PRINCIPLES



Producer payments
to LAs



Modelled net costs



Efficient & effective
collections



Environment Act 2021

Deposit Return Scheme

Section 54 (Deposit Schemes):

- confers powers on the relevant national authority to make regulations establishing deposit schemes.



DEPOSIT RETURN SCHEMES



DATA REQUESTS

- **Work to identify applicable costs at HWRCs and MRFs**
- **Cost of collections from flats**
- **Cost of collections from 'dispersed households'**
- **LARSU**

WRAP PRIORITIES

- **Food waste (1:1 support)**
- **Service change implementation planning**
- **Updated AWC guide (restricted residual collections)**
- **Dry recycling contamination guide**
- **Website good practice guide**
- **Elected member training pack**

Contact us

WRAP

Second Floor,
Blenheim Court,
19 George Street,
Banbury,
OX16 5BH
UK

www.wrap.org.uk

+44 (0)1295 819900